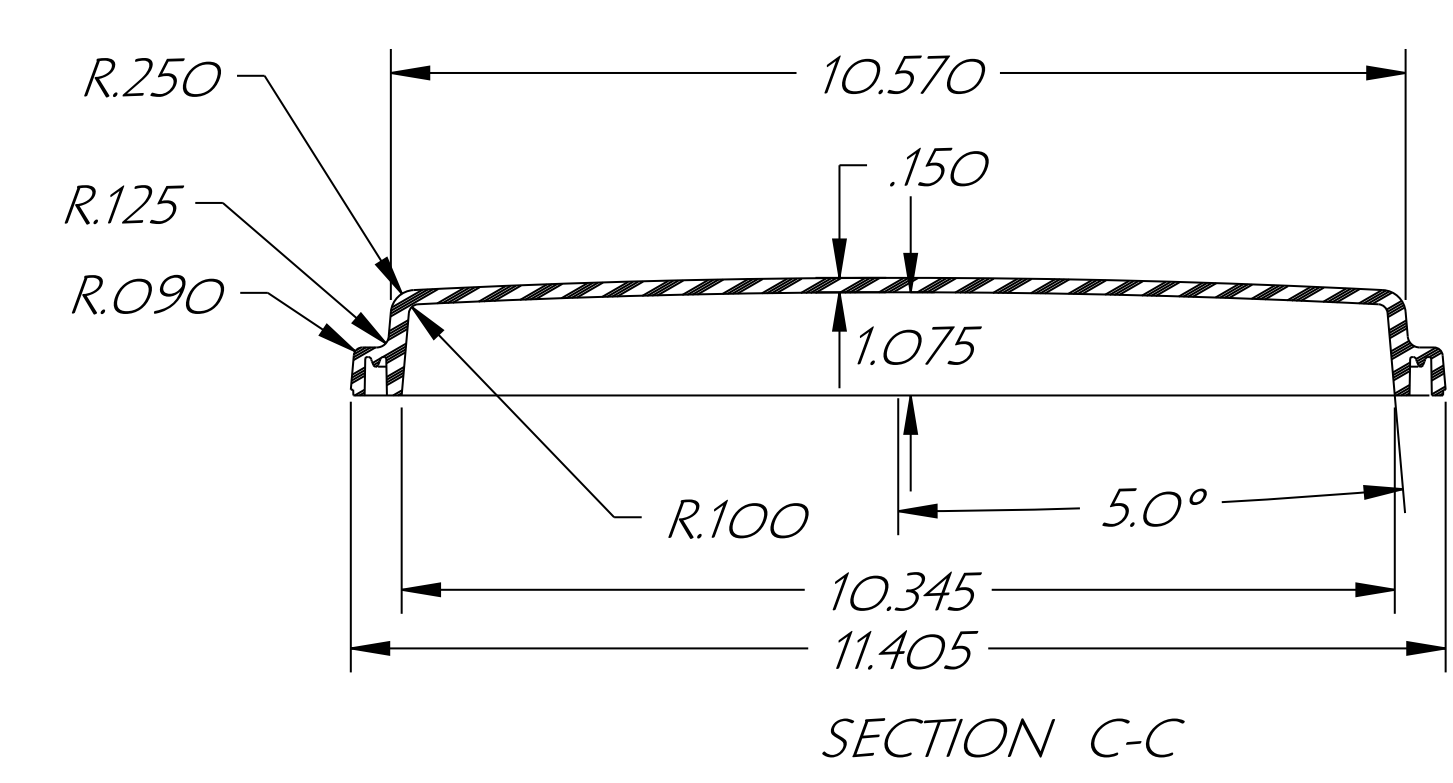
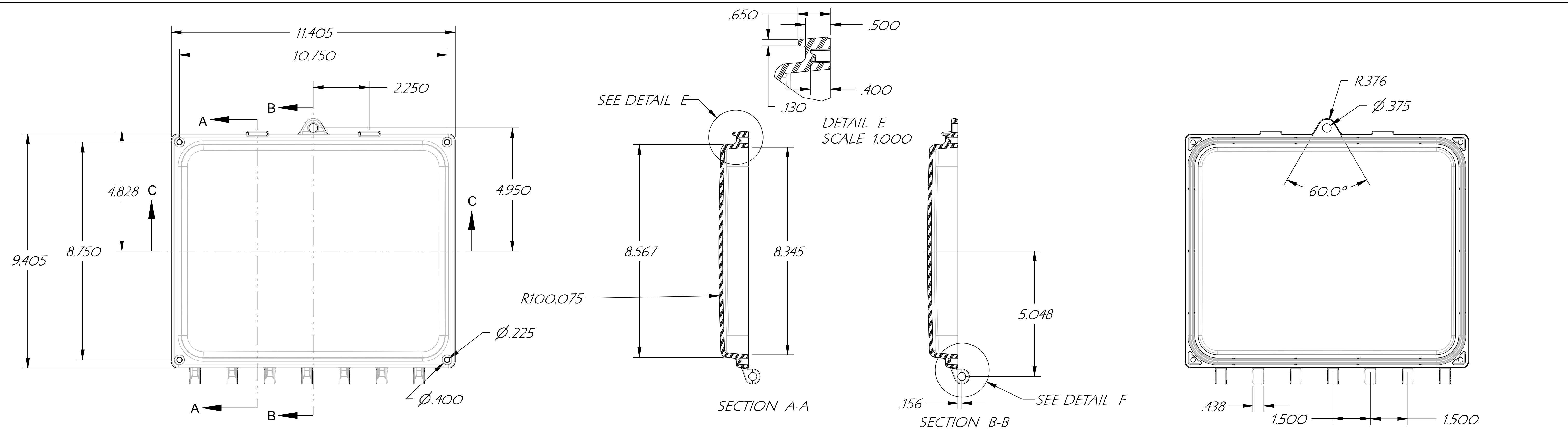
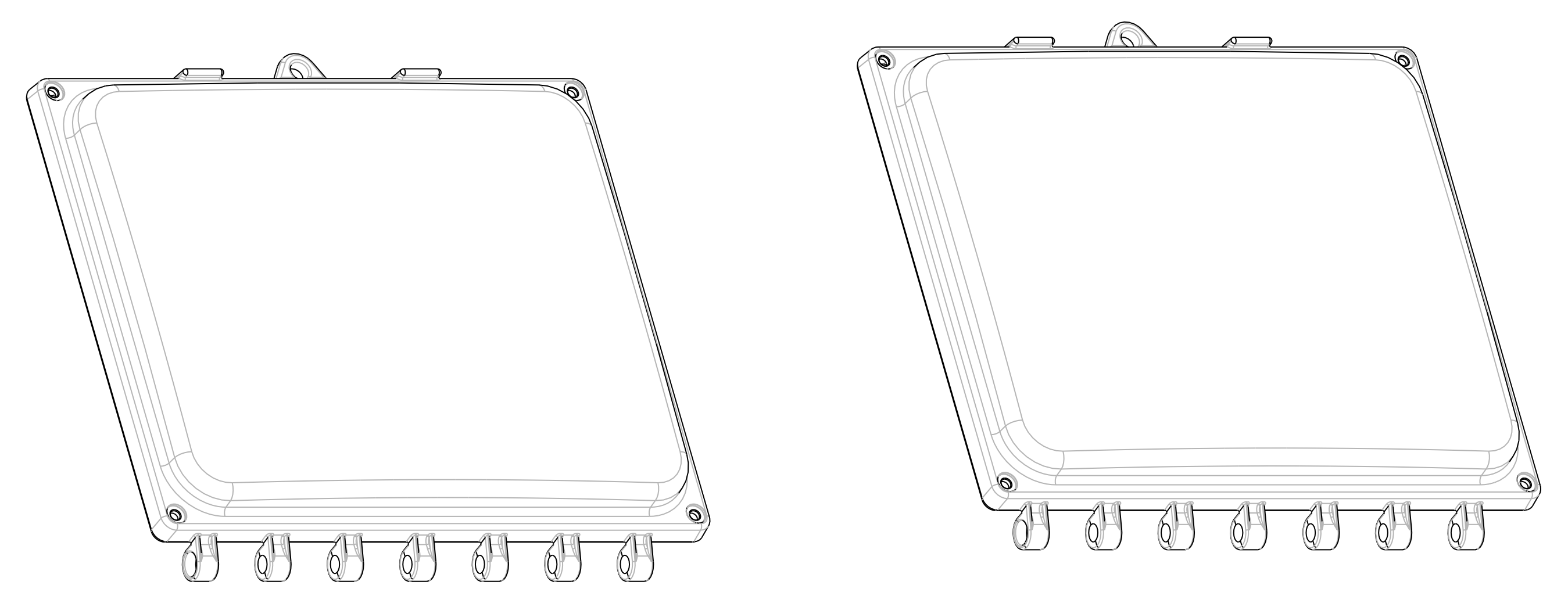
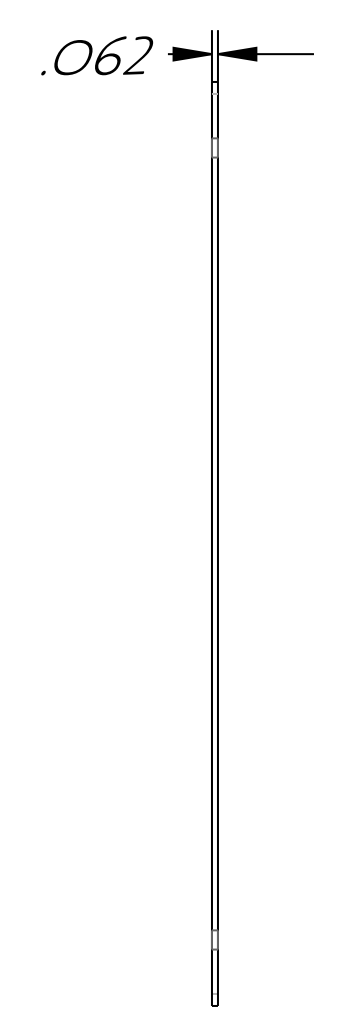
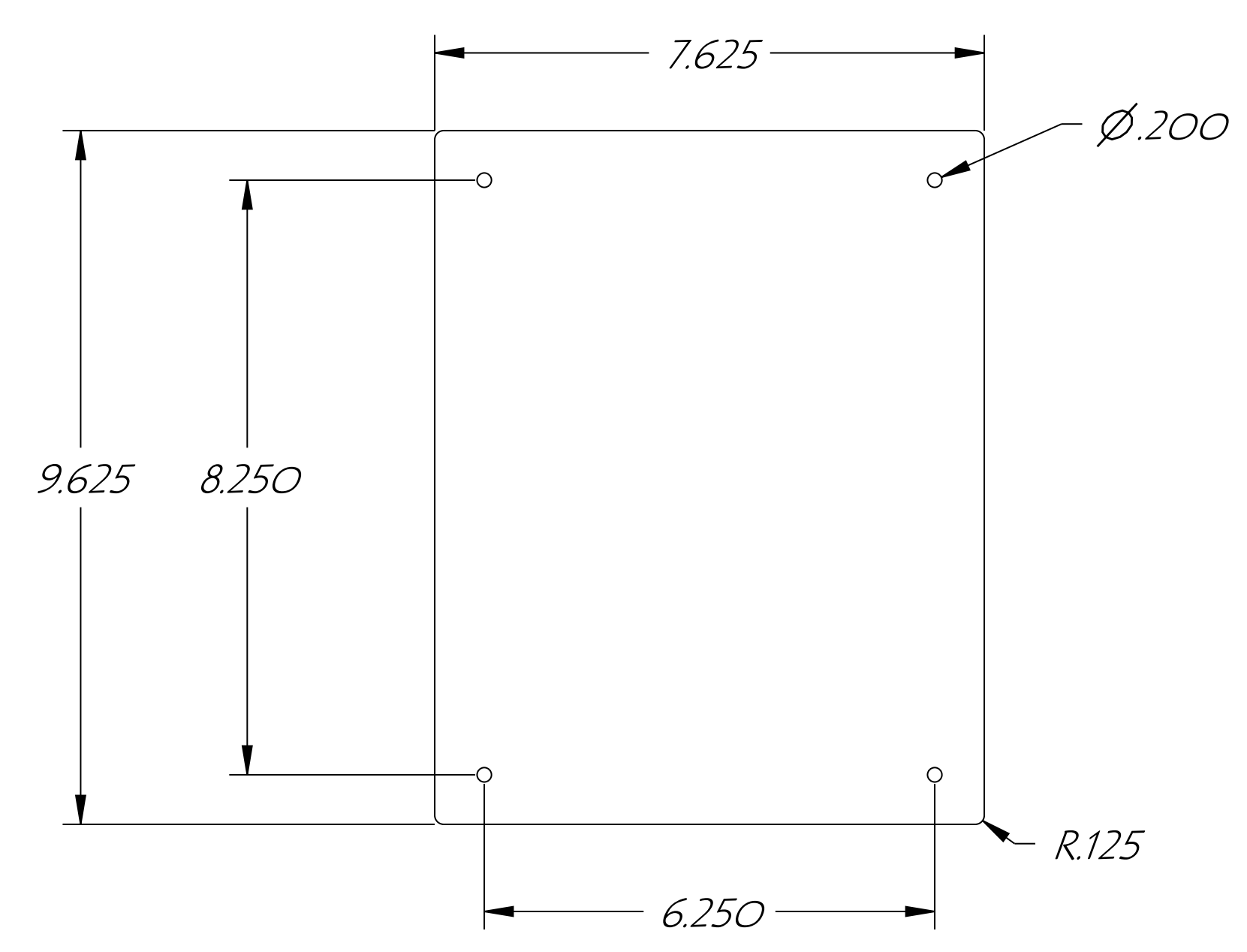
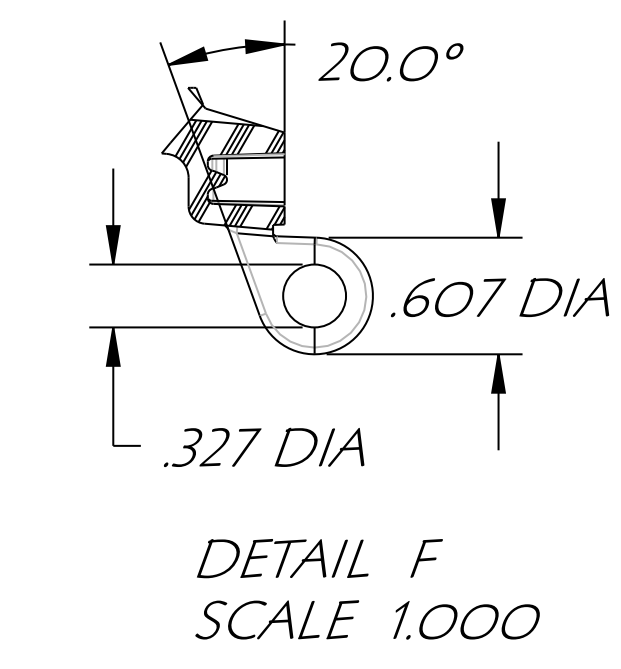


10 X 8 ENCLOSURE

DES. C.R.W. DRN. C.R.W. CHKD.	<b>ATTABOX</b>		CUSTOMER	
APP. DATE 10/16/07 SCALE				
TOLERANCES: 2 PLACE DEC. 010 FRACTIONAL 3 PLACE DEC. 005 ± 1/64 UNLESS OTHERWISE SHOWN 4 PLACE DEC. 0005 ± 1/64	PART NAME ENCLOSURE & LID	PART NO.	PART MAT'L POLYCARBONATE	
	TOOL DESC. SINGLE CAVITY INJECTION MOLD		SHRINK .006/IN.	SHEET OF

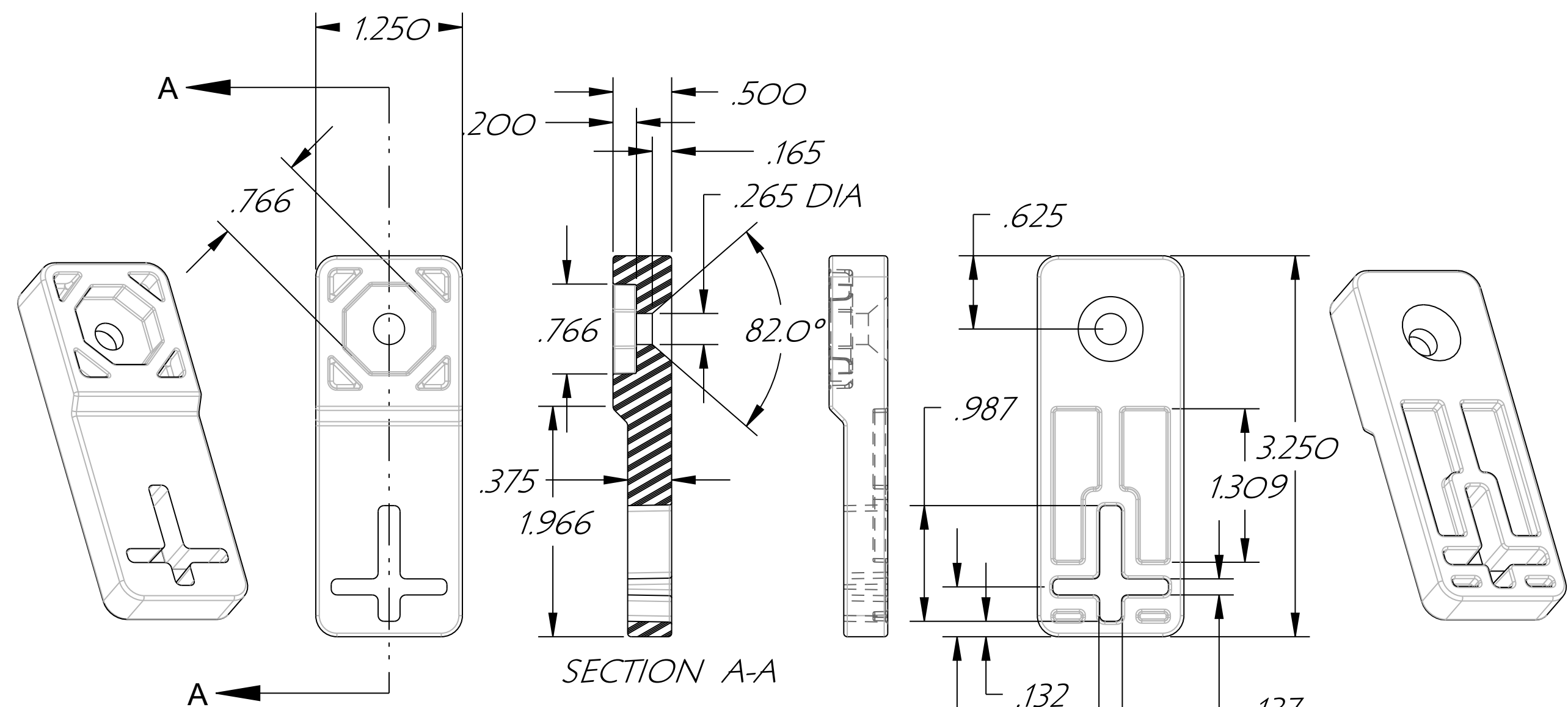


10 X 8 LID



SUB PANEL OR SWING PANEL

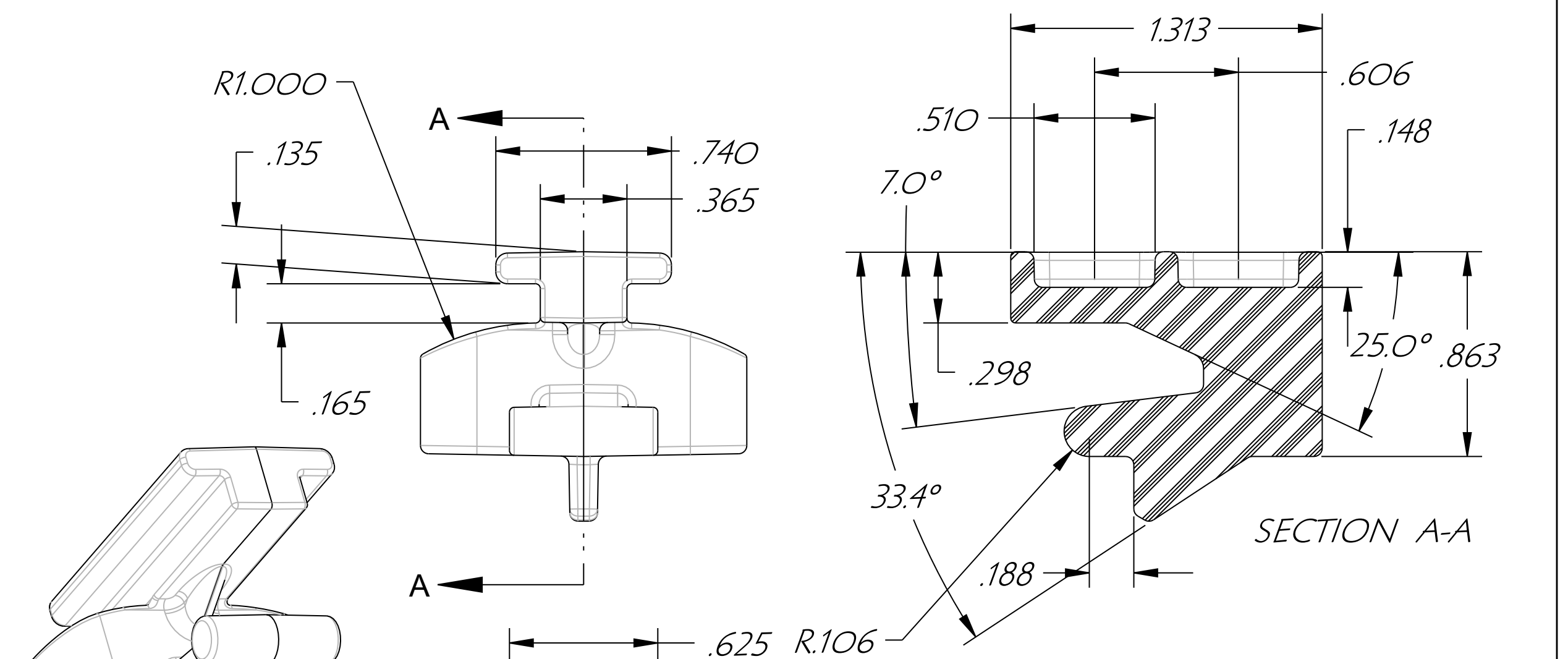
DES. C.R.W.	DRN. C.R.W.	CHKD. CHKD.	ATTABOX		CUSTOMER
APP. DATE 10/16/07	SCALE		PART NAME ENCLOSURE & LID	PART NO.	PART MAT'L POLYCARBONATE
TOLERANCES: 2 PLACE DEC. .010		FRAC.	TOOL DESC. SINGLE CAVITY INJECTION MOLD	SHRINK .006/IN.	SHEET OF
UNLESS OTHERWISE SHOWN		4 PLACE DEC. .0005 ± 1/64			



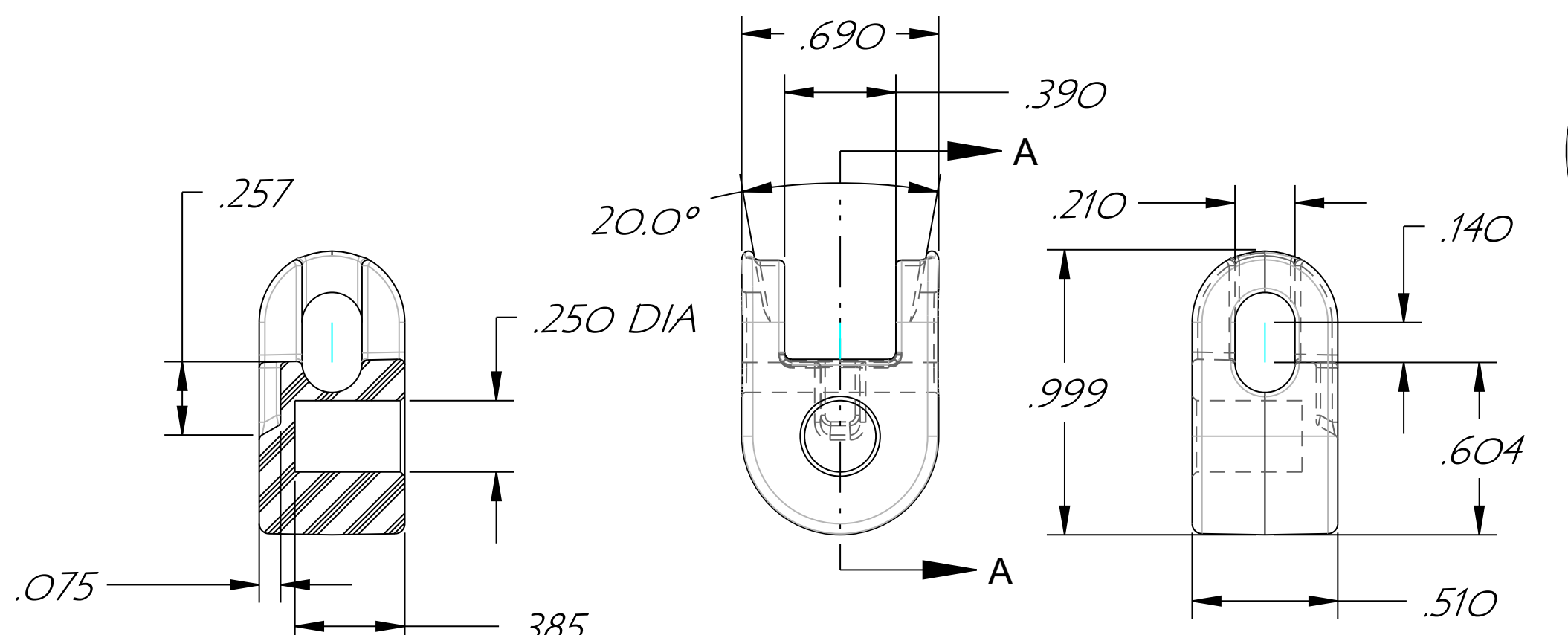
ADJUSTABLE FOOT MOUNT



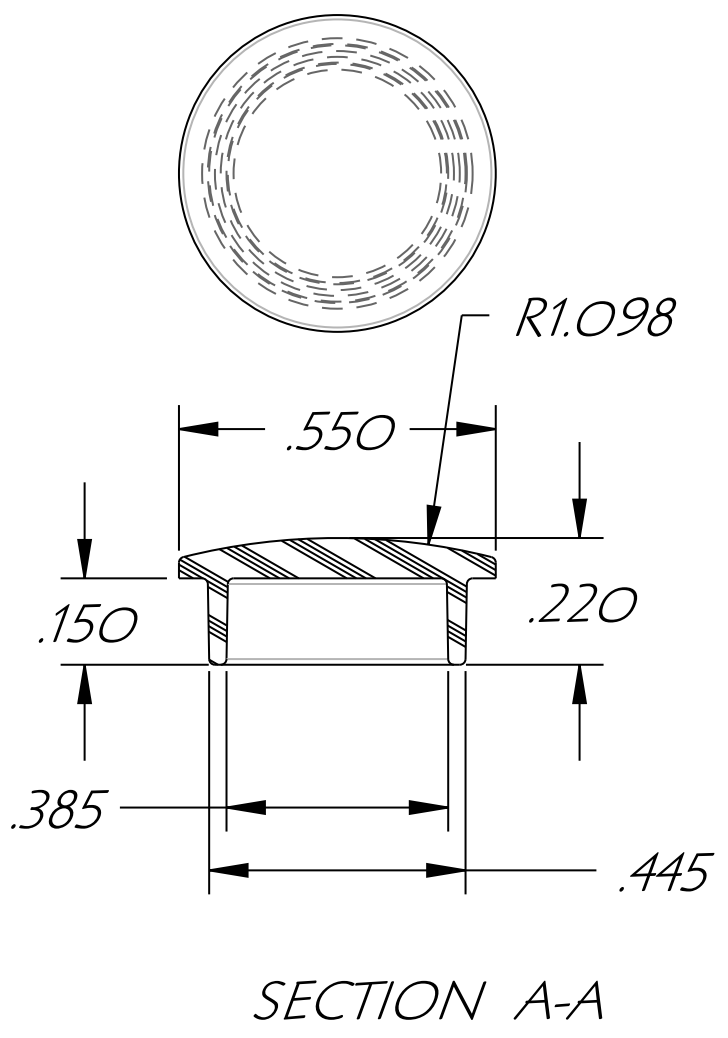
LID HINGE CAP



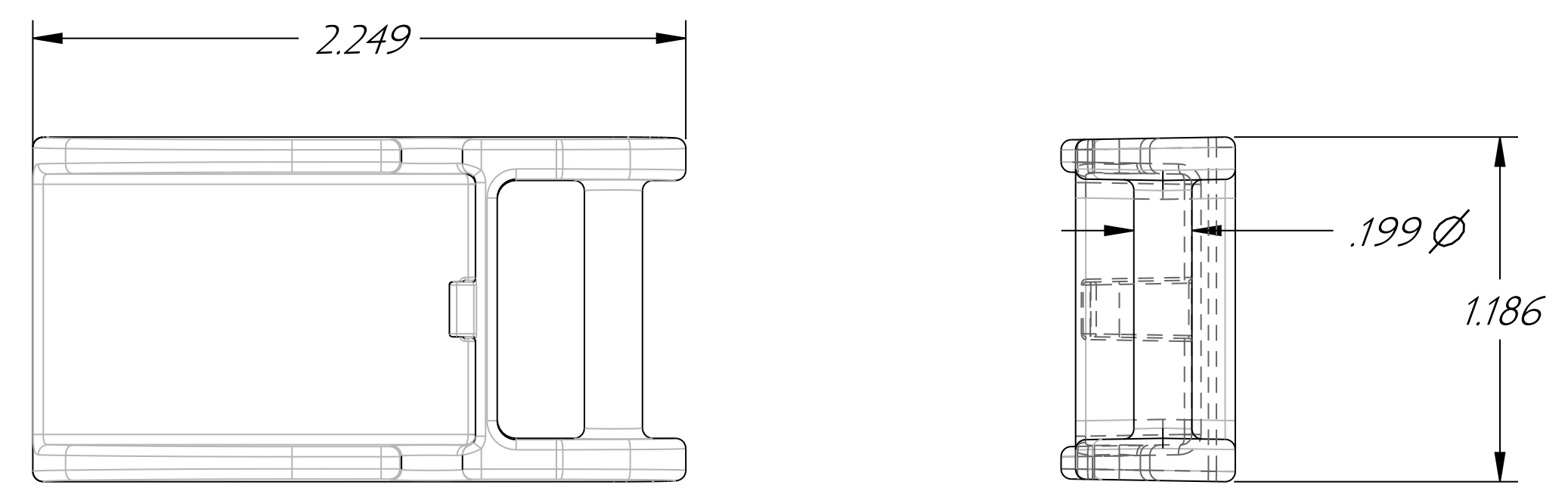
FLUSH PANEL MOUNT



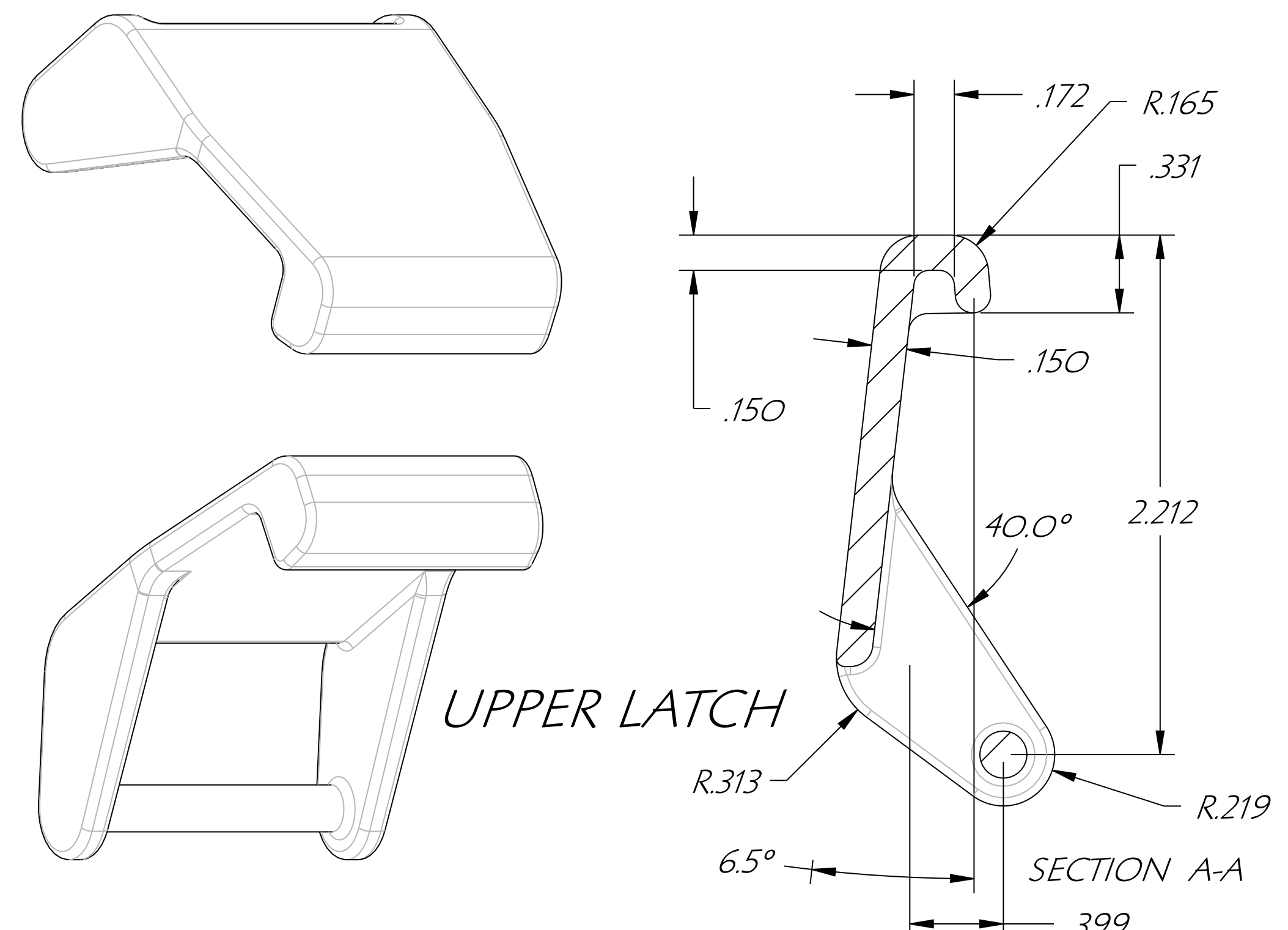
RETRACTING PANEL HINGE



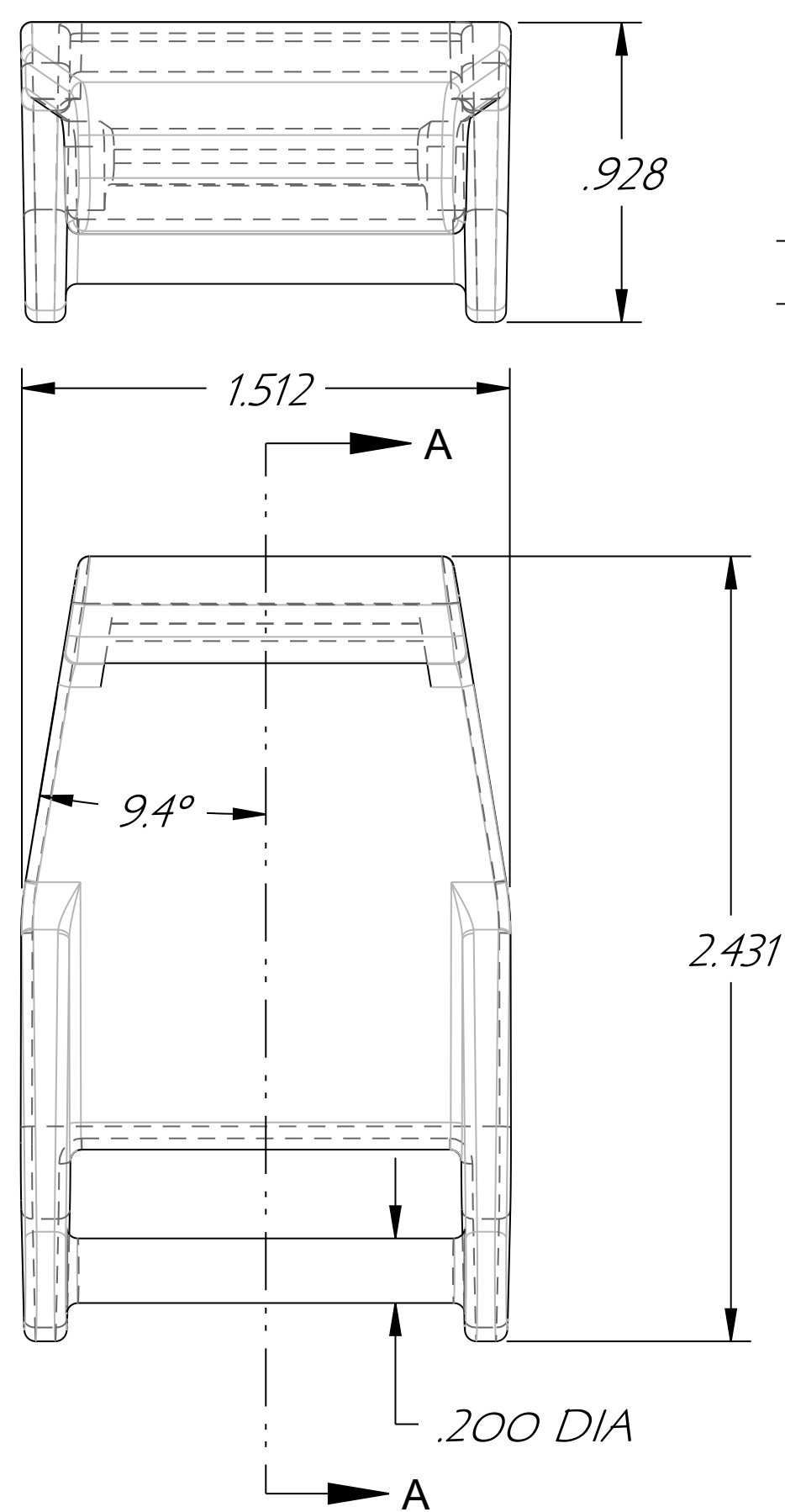
PLUG



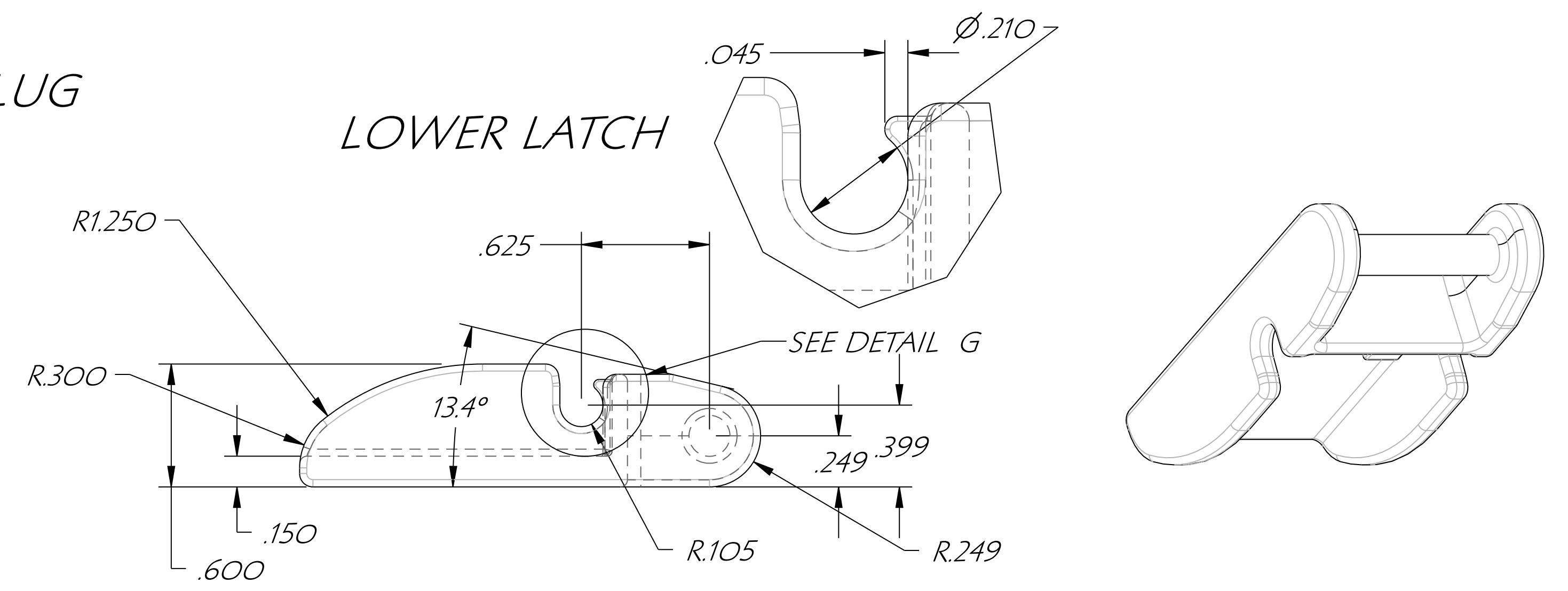
LOWER LATCH



UPPER LATCH



PLUG



DES. C.R.W.	DRN. C.R.W.	CHKD. CHD.	CUSTOMER	
APP. DATE 10/16/07	SCALE		PART NAME ENCLOSURE & LID	
TOLERANCES:		2 PLACE DEC. 010	FRAC.	PART NO.
UNLESS OTHERWISE SHOWN		3 PLACE DEC. 005	± 1/64	PART MAT'L POLYCARBONATE
				SHRINK .006/IN.
				SHEET OF